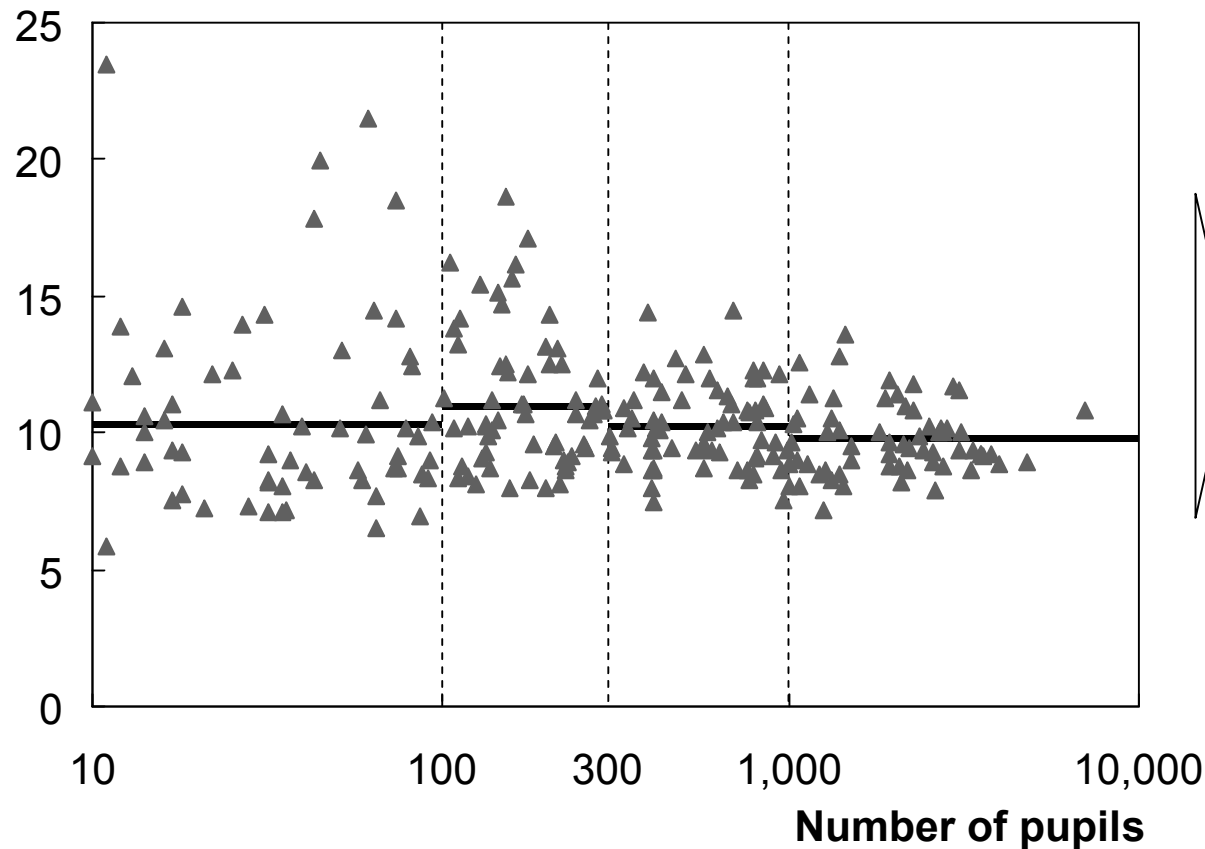


1 THERE IS SIGNIFICANT VARIABILITY IN TOTAL SPENDING PER PUPIL, REGARDLESS OF DISTRICT SIZE

Total spend per pupil for Maine school districts* by district size

\$ Thousands per pupil



• Variability between top and bottom 25% of districts with over 1,000 students is about \$4,800 per student, or 54%

* Based on sample of 258 school districts; excludes 25 districts with <10 pupils

Source: State of Maine data; team analysis